

Original Manufacturer Medical Batteries





AirSep Freestyle Portable Oxygen Concentrator (Internal)



Part Number	02225
Original No.	BT015-1

Cardiac Science Powerheart AED G3



Part Number	02139
Original No.	9146-001/ 9146-102/ 9146-202

Bard Site Rite 2 Ultrasound



Part Number	02135
Original No.	8001C0775

Cardiac Science Powerheart AED G3 Pro



Part Number	02125
Original No.	9145-001/ 9145-101**

Baxter Colleague Infusion Pump



Part Number	02124
Original No.	MD12020

Cardiac Science Powerheart AED G3 Pro



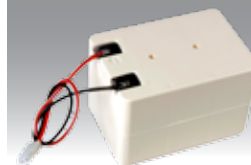
Part Number	02165
Original No.	9144-001/ 9144-101***

B.Braun Infusomat Space/Perfusor Space Infusion Pump



Part Number	02127
Original No.	8713180

CareFusion 560/565/570/572 Infusion Pump



Part Number	02157
Original No.	132412



B & D Electromedical 0913 Ventilator [Internal]



Part Number	02230
Original No.	0913

CareFusion 580/591/597/598 Infusion Pump



Part Number	02158
Original No.	129471

Cardiac Science First Save AED G3



Part Number	02084
Original No.	9143-001/ 9143-101

CareFusion Asena Syringe Pump GH/CC/PK



Part Number	02133
Original No.	1000SP01122/ 1000SP01080



CareFusion GP Pump/Large Volumetric Pump



Part Number	02126
Original No.	1000SP01302/ 1000SP00487

CareFusion GW Volumetric Pump



Part Number	02161
Original No.	1000EL00349

CareFusion PC1 Gemini Volumetric Pump



Part Number	02155
Original No.	841027

CareFusion PC2 Gemini Volumetric Pump



Part Number	02154
Original No.	841026

CareFusion Signature Gold Edition Infusion Pump



Part Number	02156
Original No.	141780

Datascope/Mindray Accutorr+ /Accutorr V/Passport 2/Passport V/Spectrum/Trio Monitor



Part Number	02100
Original No.	0146-00-0099/ 0146-00-0069

Datascope/Mindray Duo Monitor



Part Number	02118
Original No.	0146-00-0079

Datascope/Mindray VS800 Monitor



Part Number	02224
Original No.	0146-UK-0043

Datex/Ohmeda Trusat Oximeter



Part Number	02112
Original No.	6050-0006-578

Datex S5 Light Monitor



Part Number	02167
Original No.	896895-HEL

Draeger Delta/Delta XL/Gamma/Gamma XL/SC6802XL/SC6002XL Monitor [Internal]



Part Number	02160
Original No.	5732354

Draeger Delta/Gamma Monitor [External]



Part Number	02163
Original No.	5592097

**Draeger Oxylog
2000+/3000/3000+ Ventilator**



Part Number 02164
Original No. 2M86733

**GE AED
Responder Pro**



Part Number 02205
Original No. 2023681-101

**Draeger Oxylog
2000+/3000/3000+ Ventilator**



Part Number 02162
Original No. 1843303

**GE Carescope
V100 Monitor**



Part Number 02189
Original No. 2037103-016

NEW

**Fischer Zoth Natus Echo
Hearing Screener**



Part Number 02215
Original No. FZ1089

**GE Dash 3000/4000/5000
Patient Monitor**



Part Number 02111
Original No. 2017857-002

NEW

**Fresenius Compoguard
Blood Processing Equipment**



Part Number 02234
Original No. 9029501

**GE Dinamap
MPS 722X Monitor**



Part Number 02108
Original No. 633153/
300955

NEW

**Fresenius Injectomat
Syringe Pump**



Part Number 02209
Original No. Z178130

**GE Dinamap Pro
100-400 BP Monitor**



Part Number 02106
Original No. 633132

NEW

**Fukuda Denshi
FCP-2155 EKG**



Part Number 02219
Original No. 8HRAAFD

NEW

**GE Logiq
E Ultrasound**



Part Number 02212
Original No. 5120410-2

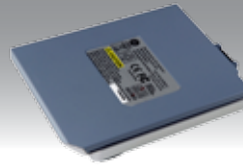


**GE Mac
400 ECG**



Part Number 02192
Original No. 2030912-001

**GE Vivid I
Ultrasound**



Part Number 02152
Original No. 2378963-2

**GE/Marquette
MAC 1600 EKG**



Part Number 02172
Original No. 2035701-001/
2032095-001

**GE Voluson E
Ultrasound**



Part Number 02207
Original No. KTZ302054/
KTZ220278

**GE/Marquette
Mac 3500/5000/5500 ECG**



Part Number 02110
Original No. 900770-001

**Heartsine Samaritan
AED**



Part Number 02231
Original No. SBP-001

**GE/Marquette Responder
3000 Defib**



Part Number 02171
Original No. 2009218-001/
30344631

**Heine
Accubox II**



Part Number 02186
Original No. X-04.99.641/
X-04.99.624

**GE PDM
Monitor**



Part Number 02149
Original No. 2031069-003/
2016989-002

**Heine M2Z
Ophthalmoscope**



Part Number 02089
Original No. D-01.89.013

**GE Responder
2000 Defib**



Part Number 02206
Original No. 2025267-001

**Heine M3Z
Ophthalmoscope**



Part Number 02235
Original No. X-02.99.106

Heine MPack Ophthalmoscope



Part Number	02170
Original No.	X-007.99.676

Heine Ophthalmoscope



Part Number	02004
Original No.	X-02.99.382

Heine S3Z Ophthalmoscope



Part Number	02006
Original No.	X-02.99.314

Innomed Medical Cardioaid 200B Defib



Part Number	02222
Original No.	R-2003-1

Keeler Ophthalmoscope



Part Number	EE470009
Original No.	EP39-18918

Keeler Wireless Indirect Ophthalmoscope



Part Number	02115
Original No.	1919-P-1013

Keeler Spectra Plus Indirect Ophthalmoscope



Part Number	02228
Original No.	EP39-33907

Laerdal Suction Unit



Part Number	02239
Original No.	780400

Maquet Servo I Ventilator



Part Number	02105
Original No.	64-87-180

Masimo Radical 7 Pulse Oximeter



Part Number	02216
Original No.	1315

Medela Vario Suction Pump



Part Number	02217
Original No.	919.0012

Medtronic/Physio Control Lifepak 12 (Lithium) Mon/Defib



Part Number	02208
Original No.	11141-000106



**Medtronic/Physio Control Lifepak 12-NiCd
Mon/Defib**



Part Number	02159
Original No.	11141-000149*

**Medtronic/Physio Control Lifepak 1000
AED**



Part Number	02107
Original No.	11141-000100

**Medtronic/Physio Control Lifepak 12-SLA
Mon/Defib**



Part Number	02066
Original No.	11141-000028

**Medtronic/Physio Control Lifepak
CR+ AED**



Part Number	02117 ^B
Original No.	11403-000002

**Medtronic/Physio Control Lifepak 15
Mon/Defib**



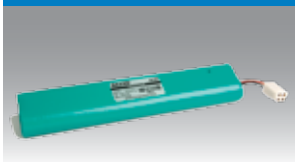
Part Number	02141
Original No.	21330-001176

**Mindray PM60
Pulse Oximeter**



Part Number	02184
Original No.	M05-010004-08

**Medtronic/Physio Control Lifepak 20
Mon/Defib**



Part Number	02120
Original No.	11141-000068

**Nihon Kohden BSM2300/BSM2351k/
Lifescape I Monitor**



Part Number	02199
Original No.	X062/ YS-076P5

**Medtronic/Physio Control Lifepak 20E
Mon/Defib**



Part Number	02142
Original No.	11141-000112

**NEW Nihon Kohden BSM3000/6000/6301K/
WEP-520x Monitor**



Part Number	02221
Original No.	X075/ SB-671P

**Medtronic/Physio Control Lifepak 500
AED**




Part Number	02109
Original No.	11141-000158/ 11141-000013/ 11141-000147

**Nihon Kohden
BSM4000 Lifescape P/BSM5100 Lifescape A Mon/Defib**



Part Number	02198
Original No.	X060/ NKB-101

Nihon Kohden
 ECG1350/TEC5500/5521/5531/7600/7621/7631/7700/7721/7731

	Part Number	02200
	Original No.	X065/ NKB-301V

Nihon Kohden
 ECG8110

	Part Number	02196
	Original No.	X040/ LCS-2012NK

Nihon Kohden
 ECG9010/9020/9022/9110/9130/9132

	Part Number	02197
	Original No.	X041A/ LCT-1912ANK


Nihon Kohden
 ECG9320/TEC7511/TEC7521/TEC7531

	Part Number	02182
	Original No.	X041B/ LC-S2912NK

Nihon Kohden
 ECG9620

	Part Number	02195
	Original No.	X071/ SB901-D

NEW
Nihon Kohden
 PVM-2701/2703 Monitor

	Part Number	02227
	Original No.	X076/ SB-201P

NEW
Nihon Kohden TEC6100/TEC7100/
 TEC7100R/TEC7200/7300 Defib

	Part Number	02220
	Original No.	X041/ LCT-1912NK-1

Philips Heartstart
 Forerunner BT1 AED

	Part Number	02104
	Original No.	BT1

Philips
 FR3 AED

	Part Number	02210
	Original No.	989803150161


Philips Heartstart
 FRx/HS1 AED

	Part Number	02136
	Original No.	M5070A

Philips Heartstart
 FR2 + AED

	Part Number	02102
	Original No.	M3863A

Philips Heartstart MRX
 Mon/Defib

	Part Number	02113
	Original No.	M3538A

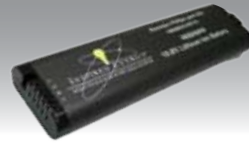


**Philips Heartstart
XL/XLT Mon/Defib**



Part Number	02101
Original No.	M3516A

**Philips Pagewriter Touch
ECG**



Part Number	02137
Original No.	989803129131

**Philips Heartstart
XL+ Defib/Mon 861290**



Part Number	02211
Original No.	989803167281

**Philips Pagewriter Trim
I/II/III ECG**



Part Number	02116
Original No.	989803130151

**Philips IntelliVue
MP2/X2 Monitor**



Part Number	02130
Original No.	M4607A

**Philips Suresigns
VM4/VM6/VM8/VS2/VS3 Monitor**



Part Number	02147
Original No.	989803144631

**Philips IntelliVue
MP20/MP30/MP40/MP50 Monitor**



Part Number	02103
Original No.	M4605A

**Possum Freedom Intercom
HC516B**



Part Number	02190
Original No.	131-213

**Philips IntelliVue
MX40 Monitor**



Part Number	02214
Original No.	989803174131

NEW
**Primedic AkuPak Lite
6/6S/AS/AED-M/M250/M290 AED**



Part Number	02243
Original No.	97195

**Philips Pagewriter Series
TC30/50/70/860306/860310/860315 ECG**



Part Number	02191
Original No.	989803170371

**Primedic Defi-B
Model M110**



Part Number	02201
Original No.	96708

Primedec EC01/DM/ Defib M240



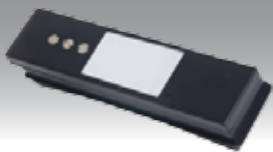
Part Number	02187
Original No.	96330

Schiller AT1/AT101 ECG



Part Number	02180
Original No.	4.350024

Primedec HeartSave 3 PAD/M250 Defib



Part Number	02202
Original No.	96790

Schiller AT10+ ECG



Part Number	02176
Original No.	3.920511

Primedec HeartSave 6/6S/AS/AED-M/M250



Part Number	02203
Original No.	96338

Schiller AT2/AT2+ ECG



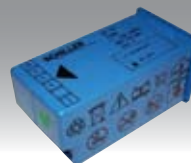
Part Number	02181
Original No.	4.350023

Propaq/Welch Allyn 802LTRN Monitor



Part Number	02148
Original No.	008-0857-00

Schiller FRED Easy Defib



Part Number	02140
Original No.	Easybat

Riester Ri-Scope LED (Plug Handle)



Part Number	02223
Original No.	10683

Schiller FRED Easyport Defib



Part Number	02146
Original No.	SCH2.230292

Riester Ri-Scope (C Type Handle)



Part Number	02233
Original No.	10682

Schiller FRED Rechargeable Battery Defib



Part Number	02168
Original No.	U16006/ BUFRNC



Sonosite 180 Plus Ultrasound



Part Number	02183
Original No.	P00049-02/ P00049-03/ P00049-04

Verathon BVI3000 Bladderscan



Part Number	02131
Original No.	0400-0039

Welch Allyn AED10



Part Number	02138
Original No.	00185-2

Welch Allyn AED20



Part Number	02143
Original No.	001830-E**

Welch Allyn CP100/CP200 ECG



Part Number	02166
Original No.	CP200

Welch Allyn Lxi Spot Vital Signs Monitor



Part Number	02145
Original No.	4500-84



Welch Allyn Ophthalmic



Part Number	02232
Original No.	71960

Zoll AED Pro



Part Number	02213
Original No.	8000-0860-01**

Zoll AED PRO- PD1400/1600/1700/2000/4410/M Series



Part Number	02119
Original No.	8000-0299-01

Zoll AED PRO R Series Surepower Defib



Part Number	02153
Original No.	8019-0535-01

Zoll Auto Pulse



Part Number	02169
Original No.	8700-0702-01

Zoll M Defib Series-XL Smart Ready Battery without Fuel Gauge



Part Number	02129
Original No.	8000-0500-01



If you require any other original manufacturer battery which is not listed here, please contact our Customer Service Team on +44 (0) 116 234 0567 for assistance

* Replaces original part number 11141-000026 (Part Number 02065) 2.4Ah Battery ** Non-Rechargeable Battery *** Rechargeable Battery
^A Rapid Dispatch available provided products are in stock at time of ordering ^B Battery supplied with 1 pair of electrodes

If you would prefer not to receive regular updates detailing our latest products and offers, please email info@euroenergy.co.uk

Euro Energy Resources Limited,
10 Barrington Business Park,
Leycroft Road,
Leicester, LE4 1ET, UK

Tel: +44 (0) 116 234 0567
Fax: +44 (0) 116 235 4183
info@euroenergy.co.uk
www.euroenergy.co.uk

Any prices quoted are ex-works and do not include carriage and VAT at the standard rate.
Original Equipment Manufacturer (OEM) medical batteries carry standard manufacturers warranties.
All batteries supplied are Original Equipment Manufacturer products.
Batteries supplied may differ from those illustrated in this document.
Euro Energy reserves the right to change any information described or contained in this leaflet at any time without notice.



MAR 2013.0EMFLF07